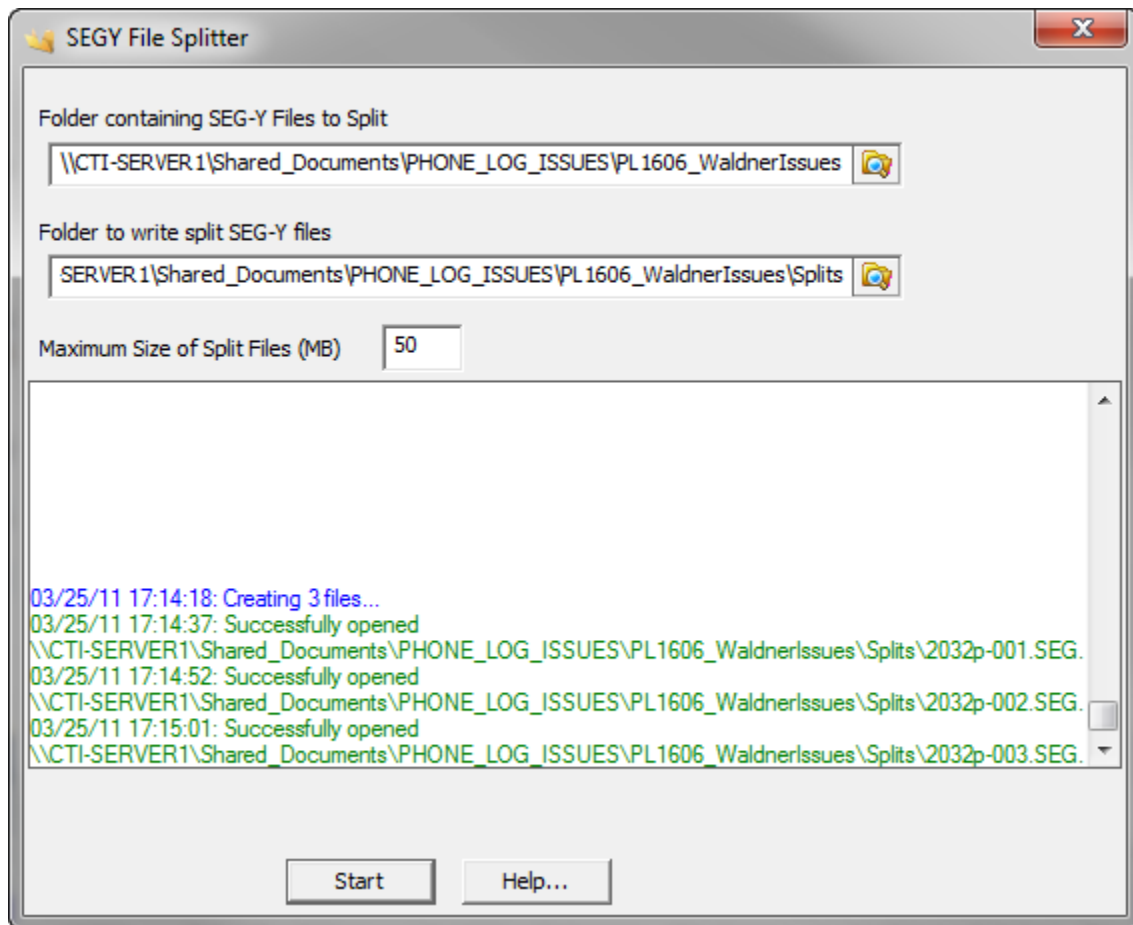


SEGY File Splitter Converter

Chesapeake Technology, Inc.

March 25, 2011



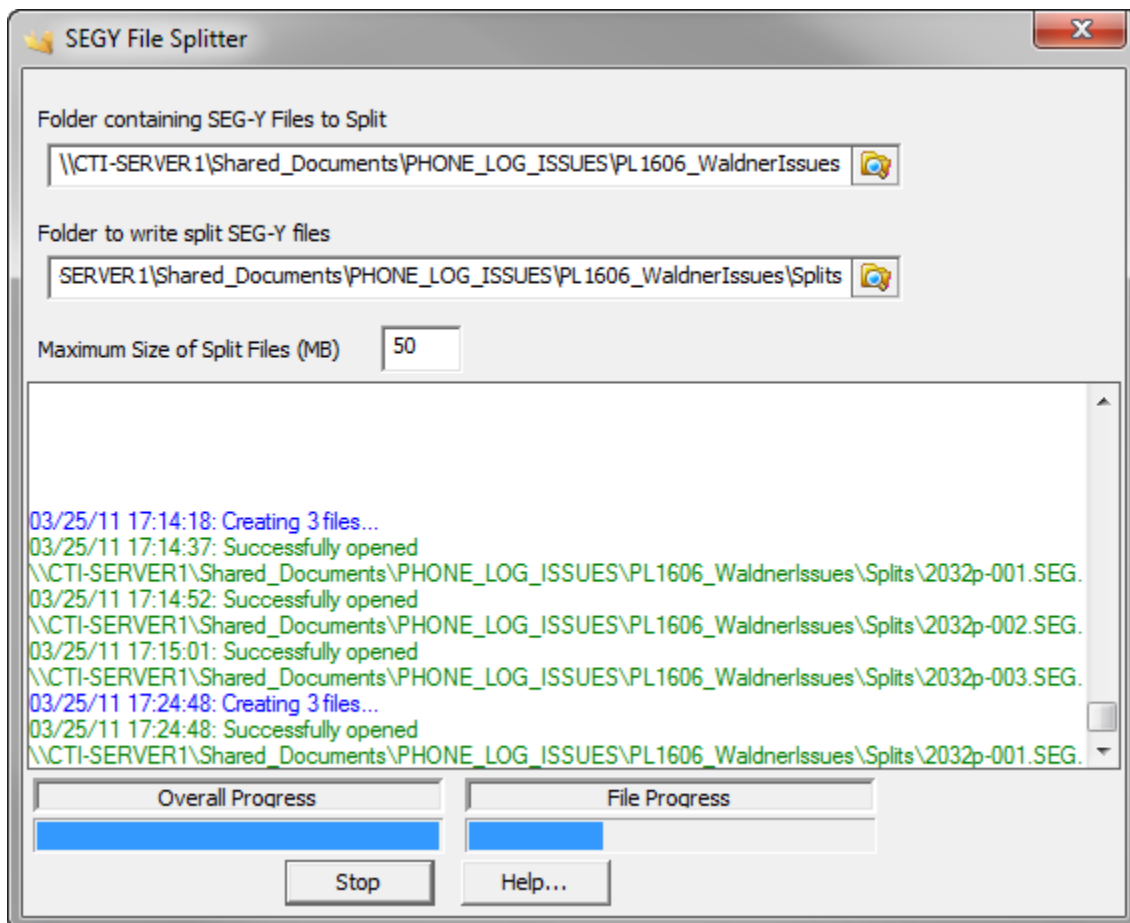
The Chesapeake SEGY Channel Splitter is a simple multi-threaded utility program that will batch split large SEG-Y files into smaller SEG-Y files of the size specified by the user.

The program allows the user to select an input folder where large input SEG-Y files are stored and an output folder where the smaller split SEG-Y files will be written.

Any SEGY file in the input folder that is larger than the Maximum Size of Split Files (MB) will be processed.

The EBCDIC and binary headers are copied from the original to the split files without change. The trace header navigation, time stamp and raw samples for each channel are copied from the source file without change.

When the start button is pressed, the utility will begin processing the SEG-Y files found in the input folder and will write each split file until the size of the split file is larger than the maximum file size specified by the user or an error occurs. If an error occurs, processing will continue with the next data file. Two progress bars indicate the overall progress as well as the individual file progress.



This utility will run if any Chesapeake dongle is detected for any Chesapeake product.