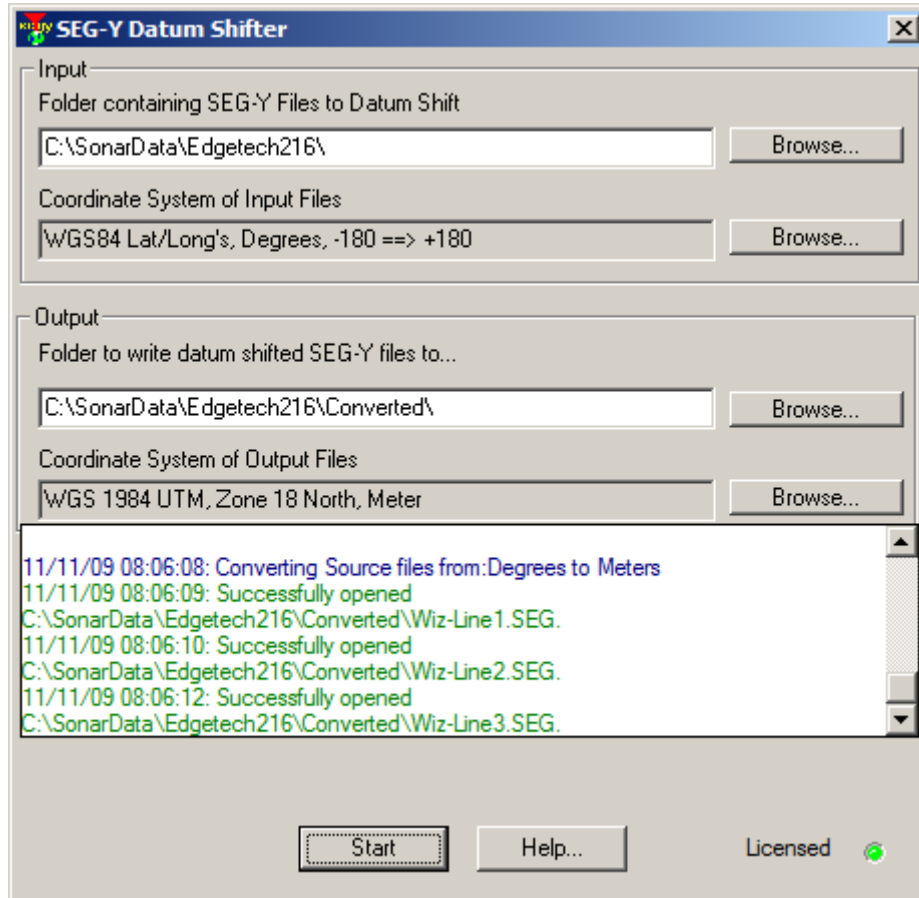


SEGY Datum Shift Converter

Chesapeake Technology, Inc.
November 11, 2009



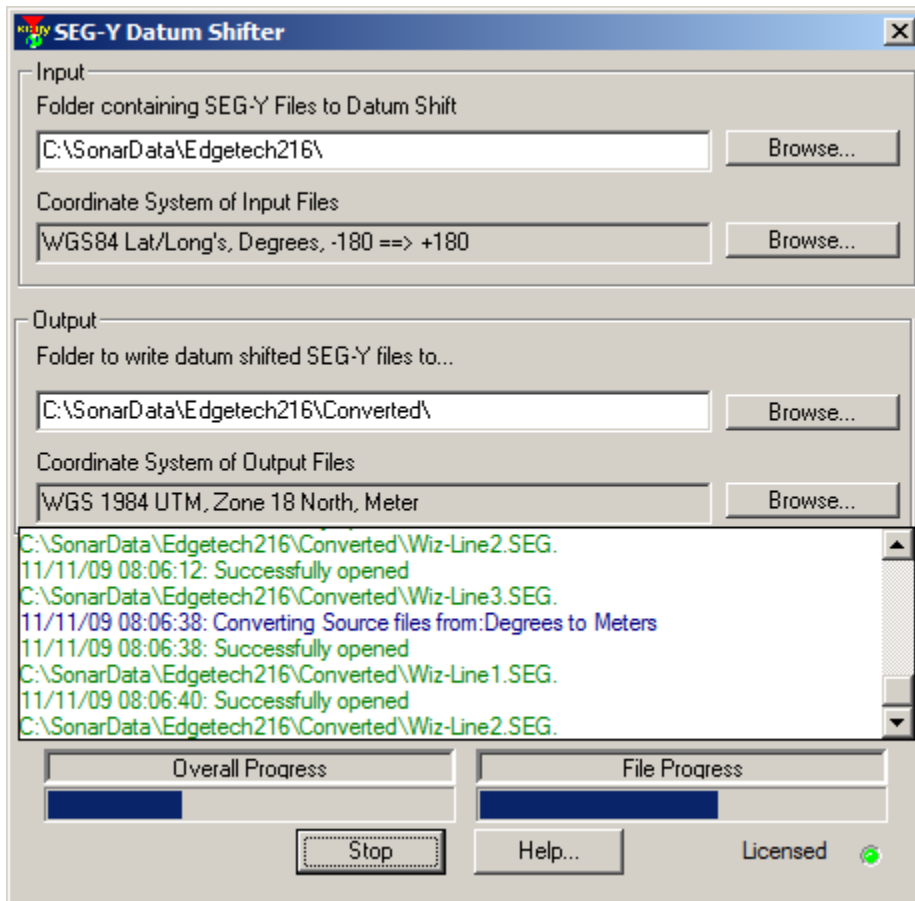
The Chesapeake SEG-Y Datum Shift Utility is a simple multi-threaded utility program that will convert the coordinates in SEG-Y file from one coordinate system and datum to another.

The program allows the user to select an input folder where the original SEG-Y files are stored and an output folder where the SEG-Y files with the new coordinate system information will be written.

Any SEG-Y file in the input folder that matches the selected input coordinate system will be processed. If you select a latitude/longitude input coordinate system but the input file has coordinates that are not stored in seconds of arc, a mismatch occurs and this file will not be selected for conversion since it would fail. This utility can only work correctly when the input SEG-Y file has correctly defined the map units as either length (1) or seconds of arc (2). The map units value is defined in bytes 85-90 of the SEG-Y trace header.

The EBCDIC and binary headers are copied from the original to the converted files without change.

When the start button is pressed, the utility will begin processing the SEG-Y files found in the input folder and will write each converted SEG-Y file until it completes or an error occurs. If an error occurs, processing will continue with the next data file. Two progress bars indicate the overall progress as well as the individual file progress.



This utility will run if a dongle is detected for any Chesapeake product.