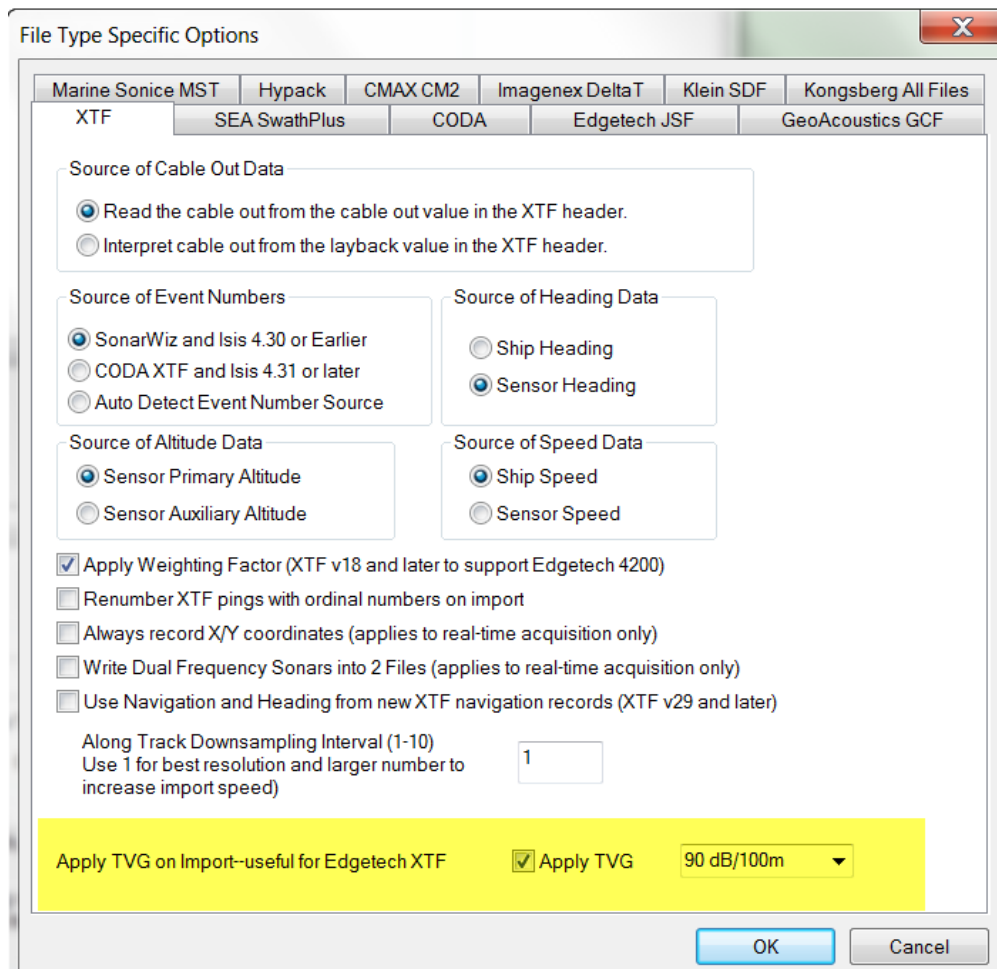




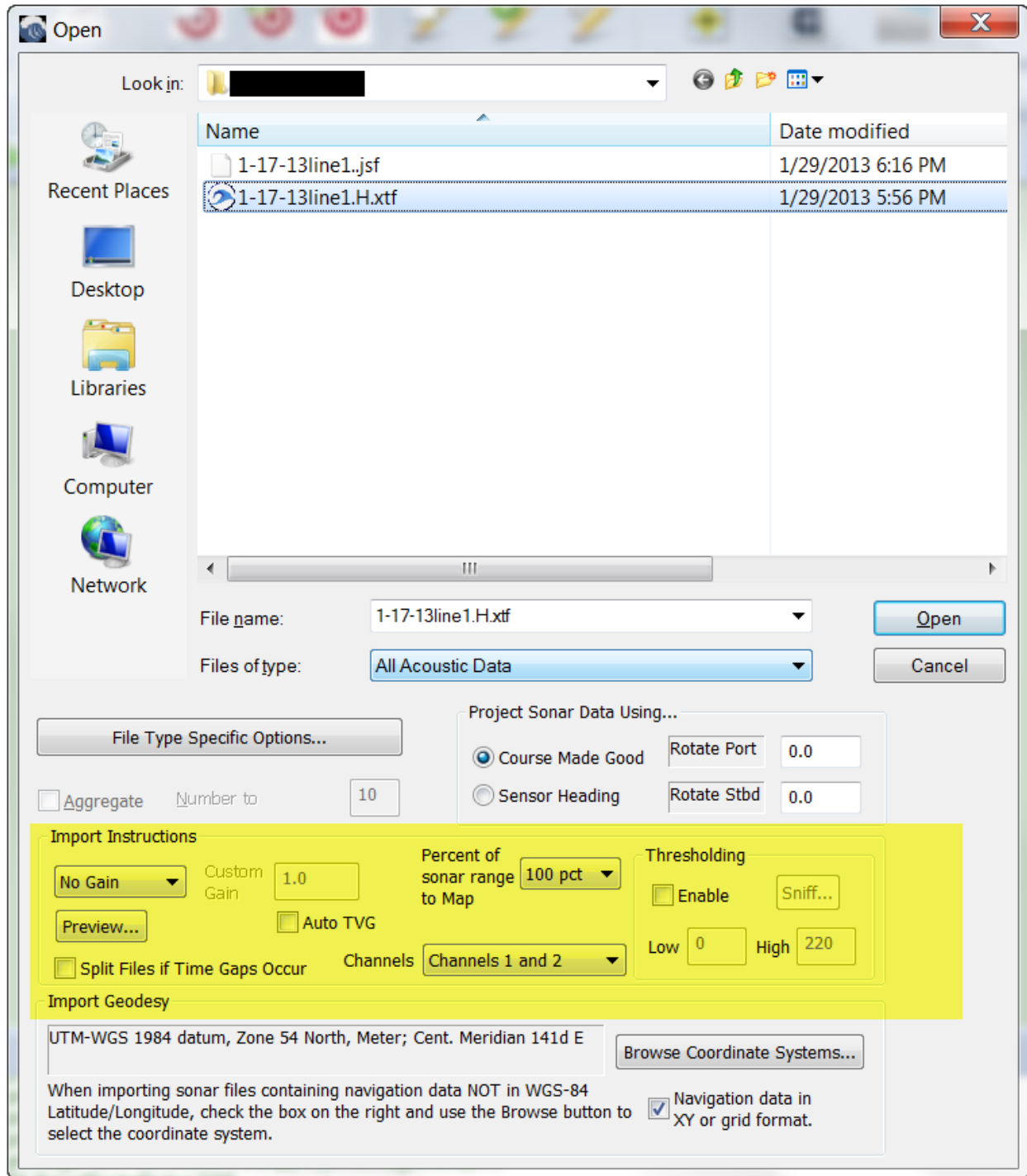
# Importing low-gain XTF Files into a SonarWiz Project

Here are the simple steps to get you going when importing extremely low-gain XTF data.

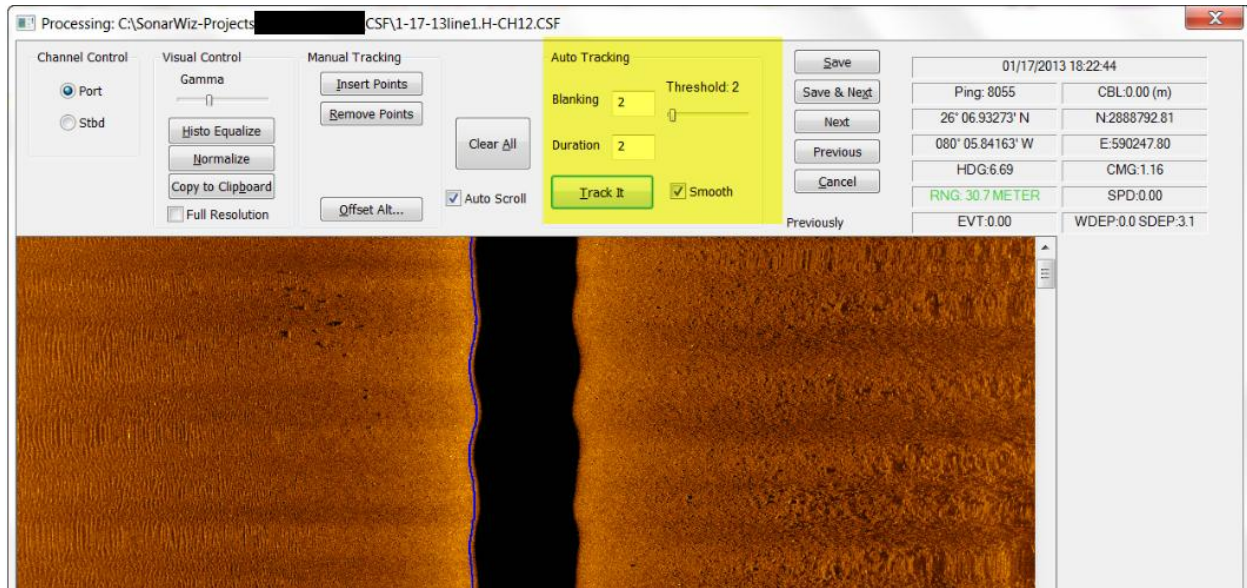
- 1) Use the Post-Processing->Import->Import Sidescan Files dialog to select your files.
- 2) With this dialog open, click on the File Type Specific Options button and configure the XTF tab as shown below:



3) The Import dialog itself should look like this:



4) Once the file imports, select it in the Project Explorer window and then right-click and select the bottom tracker window. Here you will use the automated tracker to detect the height of the sonar towfish above the seabed.



Once this window opens set the highlighted values and press the Track It button to run the automated tracker. Then use the Offset Altitude button to nudge the altitude 0.5 meters deeper.

5) The next step, which is optional, is to apply some gain functions to improve the image quality. If you want to do that you can right click on the file again and choose the Settings option. I set the check box for the EGN gain function. Next you need to click the Build Empirical Gain Table button and check all the files that you have bottom tracked (in my case its only this one). Next, press the Apply button.