

## *Contact Database Editing Techniques*

*Revision 2.0, 4/2/2018*

Chesapeake Technology, Inc.

eMail: [support@chesapeaketech.com](mailto:support@chesapeaketech.com)

Main Web site: <http://www.chesapeaketech.com>

Support Web site: <http://www.chestech-support.com>

1605 W. El Camino Real, Suite 100  
Mountain View, CA 94040

Tel: 650-967-2045

Fax: 650-450-9300



## Table of Contents

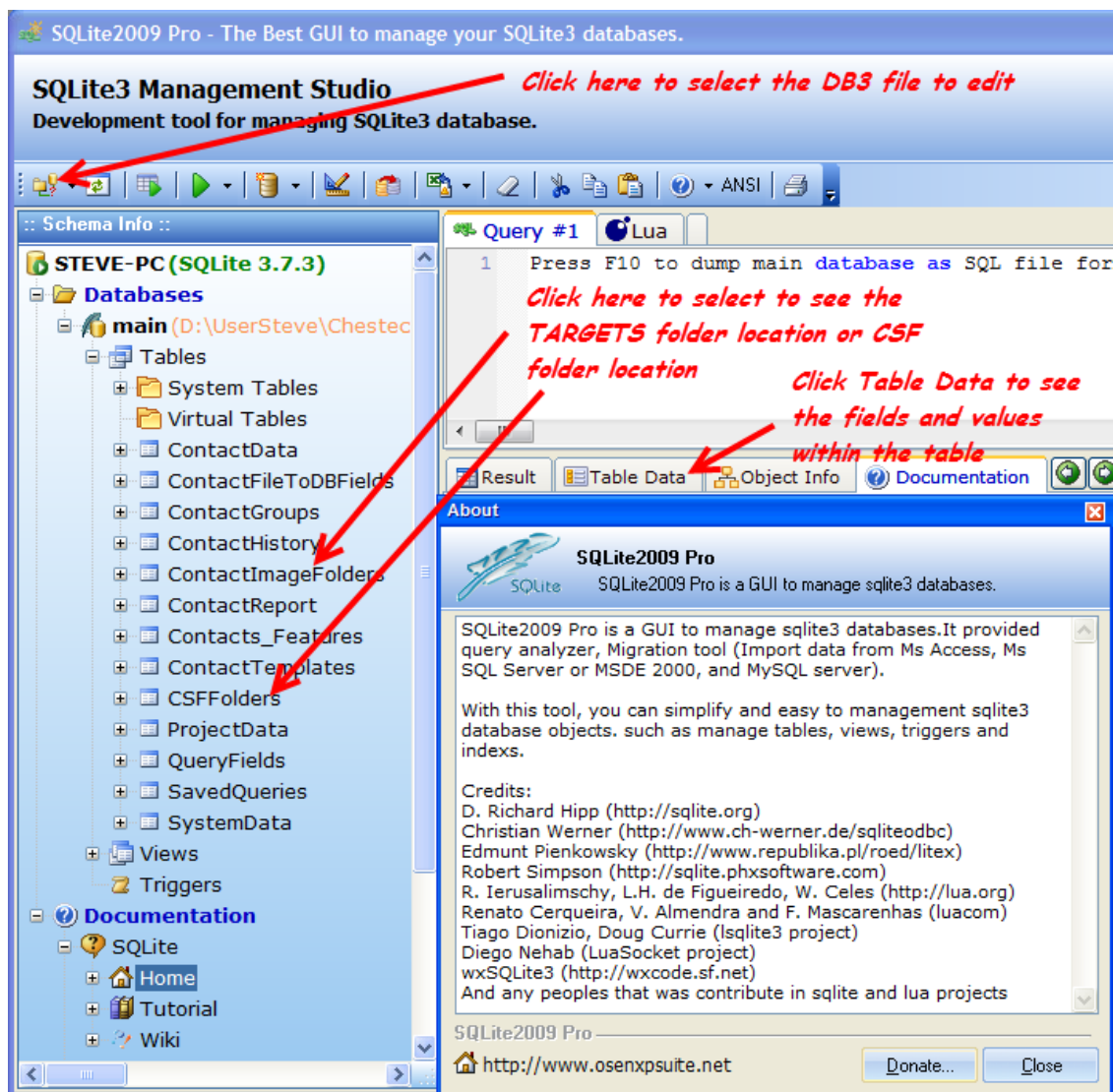
1	SonarWiz Contact Database Editing Techniques.....	2
1.1	Using a DB3 Editor.....	2
2	Main Tables to Edit in ContactDBR001.db3.....	4
2.1	ContactData Table Contents.....	4
2.2	CSFFolders Table Values.....	5
2.2.1	Editing the CSFFolders table FullPath value for a cell.....	5
2.3	Next ContactData Column of Interest - TargetFolderID.....	6
2.4	ContactImageFolders - Editing Field Values.....	7
3	Resources.....	7
4	Document Versions.....	8

## 1 SonarWiz Contact Database Editing Techniques

Contacts are captured in SonarWiz as a location on a particular CSF file, and all the associated data are stored in a database file, in the project root folder, with the file being named ContactDBR001.DB3. This document explains a few of the tables in the contact database file, and how to manage them.

### 1.1 Using a DB3 Editor

Any DB3 editor may be used to view inside the contact database (not while SonarWiz is running). In-house at CTI we have been using SQLite2009Pro, a free-ware utility available and handy. We use version 3.7.3 and it looks like this:



The main steps to an editing session are:

(1) Make a copy of your ContactDBR001.db3 file, perhaps like this:

Copy ContactDBR001.db3 to ContactDBR001\_original.db3

Edit ContactDBR001.db3 and test the changes

(2) To edit the DB3, use SQLite2009Pro and select to OPEN the DB3 file

(3) When the DB3 file is OPEN, select the name of the table you wish to view

(4) Click the TABLE DATA tab to see the field values within that table

(5) Double-click on a field value to edit it. An editing example is shown below.

## 2 Main Tables to Edit in ContactDBR001.db3

### 2.1 ContactData Table Contents

This table contains the contact list:

The screenshot shows the SQLite3 Management Studio interface. On the left, the 'Schema Info' pane shows the 'main' database with a tree view of tables, including 'ContactData'. The main window displays a query result for the 'ContactData' table. The table has columns: ID, Name, displayYN, deletedYN, and ContactVersion. The data rows show various contact entries with their respective IDs and versions.

Red annotations in the image include:

- An arrow pointing to 'ContactData' in the schema tree with the text: *Select the Table name, then*
- An arrow pointing to the 'ContactData' table name in the query editor with the text: *select Table Data to see field values*
- An arrow pointing to the column headers in the data grid with the text: *Column Names*

ID	Name	displayYN	deletedYN	ContactVersion
1	Contact0001__Del0922145747	1	1	3
2	Contact0001__Del1003122137	1	1	3
3	Contact0002__Del1003122133	1	1	3
4	Contact0003__Del1013111152	0	1	3
5	Contact0004__Del1013111138	0	1	3
6	Contact0005	1	0	3
7	Contact0006	1	0	3
8	Contact0007	1	0	3
9	Contact0008__Del1013111127	0	1	3
10	Contact0009	1	0	3
11	Contact0010	1	0	3
12	Contact0011	1	0	3
13	Contact0012	1	0	3
14	Contact0013	1	0	3
15	Contact0014	1	0	3
16	Contact0015	1	0	3

and for each one, has numerous labeled columns of data.

Scrolling to the right and seeing columns off-screen, you can find CSFFolderID and CSFFilename columns like this:

ImageFolderID	ImageFilename	CSFFolderID	CSFFilename
2	Contact0000__Del0922145747.JPG	1	bb13-sc8-a006-ch12.csf
2	Contact0001__Del1003122137.JPG	1	bb13-sc8-a006-ch12.csf
2	Contact0002__Del1003122133.JPG	1	bb13-sc8-a006-ch12.csf
2	Contact0003__Del1013111152.JPG	1	bb13-sc8-a006-ch12.csf
2	Contact0004__Del1013111159.JPG	1	bb13-sc8-a007-ch12.csf
1	Contact0005.JPG	1	bb13-sc8-a007-ch12.csf
1	Contact0006.JPG	1	bb13-sc8-a009-ch12.csf
1	Contact0007.JPG	1	bb13-sc8-a009-ch12.csf
2	Contact0008__Del1013111127.JPG	1	bb13-sc8-a009-ch12.csf
1	Contact0009.JPG	1	bb13-sc8-a009-ch12.csf
1	Contact0010.JPG	1	bb13-sc8-a009-ch12.csf
1	Contact0011.JPG	1	bb13-sc8-a009-ch12.csf
1	Contact0012.JPG	1	bb13-sc8-a010-ch12.csf
1	Contact0013.JPG	1	bb13-sc8-a010-ch12.csf
1	Contact0014.JPG	1	bb13-sc8-a010-ch12.csf
1	Contact0015.JPG	1	bb13-sc8-a011-ch12.csf

The key field value here is 1 for the CSFFolderID.

## 2.2 CSFFolders Table Values

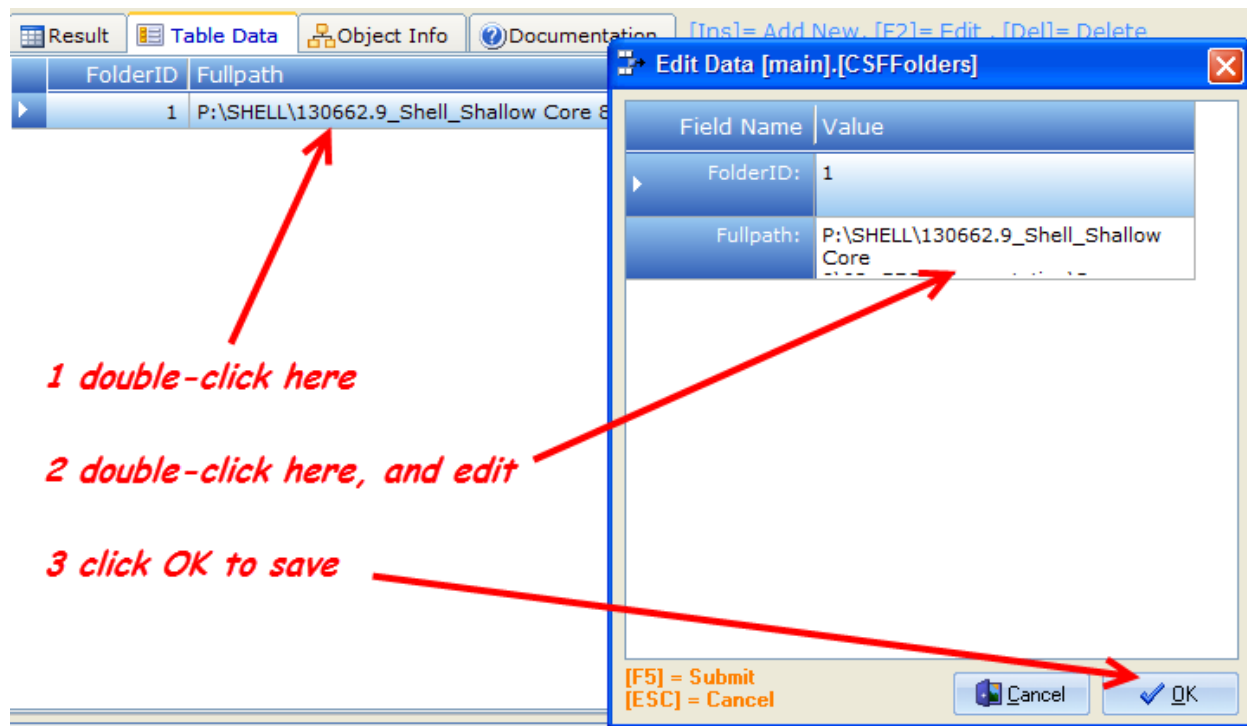
Look up the CSFFolderID value = 1 in the next table of interest:

FolderID	Fullpath
1	P:\SHELL\130662.9_Shell_Shallow Core 8\03_GEO\Interpretation\Recovered Sonarwiz 31.12.13\SonarWiz\CSF

In the FolderID column of this table, in the row where the field value = 1, there is an associated value in the FullPath column. Look at it and see if it is correct.

### 2.2.1 Editing the CSFFolders table FullPath value for a cell

To edit the value of FullPath in a cell, just double-click on the cell, and it becomes an editable field:



Once you have done step 2 above, you may replace the field data either by typing in a new full path value, or using copy/paste from another place - like a text file or e-mail, containing the full path name.

When you do step 3, the data are saved in the DB3 file - there is no further SAVE step necessary.

### 2.3 Next ContactData Column of Interest - TargetFolderID

Back in the main ContactData table, let's look at the second column commonly needing a view - which is the ImageFolderID (the location of the project "Targets" folder):

ImageFolderID	ImageFilename	CSFFolderID	CSFFilename
2	Contact0000__Del0922145747.JPG	1	bb13-sc8-a006-ch12.csf
2	Contact0001__Del1003122137.JPG	1	bb13-sc8-a006-ch12.csf
2	Contact0002__Del1003122133.JPG	1	bb13-sc8-a006-ch12.csf
2	Contact0003__Del1013111152.JPG	1	bb13-sc8-a006-ch12.csf
2	Contact0004__Del1013111159.JPG	1	bb13-sc8-a007-ch12.csf
1	Contact0005.JPG	1	bb13-sc8-a007-ch12.csf
1	Contact0006.JPG	1	bb13-sc8-a009-ch12.csf
1	Contact0007.JPG	1	bb13-sc8-a009-ch12.csf
2	Contact0008__Del1013111127.JPG	1	bb13-sc8-a009-ch12.csf
1	Contact0009.JPG	1	bb13-sc8-a009-ch12.csf
1	Contact0010.JPG	1	bb13-sc8-a009-ch12.csf
1	Contact0011.JPG	1	bb13-sc8-a009-ch12.csf
1	Contact0012.JPG	1	bb13-sc8-a010-ch12.csf
1	Contact0013.JPG	1	bb13-sc8-a010-ch12.csf
1	Contact0014.JPG	1	bb13-sc8-a010-ch12.csf
1	Contact0015.JPG	1	bb13-sc8-a011-ch12.csf

You can see the field values 1 and 2, which will typically represent the intact and deleted contacts' folders. To see where these are located, look in the next table of interest - ContactImageFolders.

### 2.4 ContactImageFolders - Editing Field Values

FolderID	Fullpath
1	P:\SHELL\130662.9_Shell_Shallow Core 8\03_GEO\Interpretation\Recovered Sonarwiz 31.12.13\SonarWiz\targets\
2	P:\SHELL\130662.9_Shell_Shallow Core 8\03_GEO\Interpretation\Recovered Sonarwiz 31.12.13\SonarWiz\targets\deleted\

You see where the Targets folder of the project is located, by selecting to see the DB3 table called "ContactImageFolders", and selecting Table Data tab.

Editing the table contents of this table is identical to editing CSFFolders table - just click on a cell in the table, then select the field to edit again with a double-click, edit the data and click OK.

## 3 Resources

We are not the authors of SQLite2009Pro freeware, but we keep a copy of the version 3.7.3 ZIP file available for use, here:

<https://sonarwiz.box.com/s/frhpym7u9wca0t11iueok62429ajua3>

## 4 Document Versions

Rev 2, 4/2/2018 - Updated for BOX.com link to SQLite2009Pro resource

Rev 1/ 1/15/2014 - Initial version