

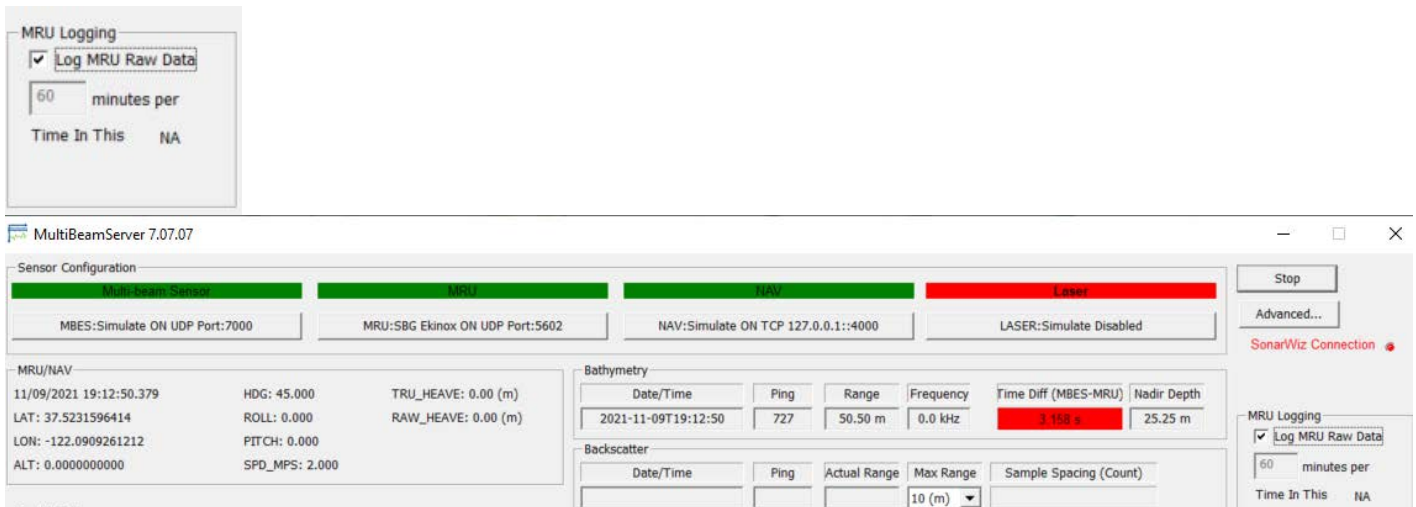


November 2021

Chesapeake SonarWiz Now Logs Raw IMU Data

Chesapeake's SonarWiz Multibeam Server 7.7.7.0 can now log raw IMU messages from connected motion sensors. This datalogging feature was developed in an effort to ease the workflow of surveyors using SBG Inertial Navigation Sensors (INS), but more specifically, users of SBG's low SWAP Ellipse-N or Ellipse-D, which require an external datalogger if post-processing in SBG's Qinertia PPK software is desired. The datalogger captures the full data stream, typically 200 Hz, and provides flexibility to process the data in Qinertia for high level data analysis and/or higher accuracy position and orientation, as needed after a survey.

Until now, SonarWiz logged bathymetry and all ancillary sensors to the XTF file. The separate log file provides greater functionality and flexibility. No special set-up is required, and by simply launching the Multibeam Server, the ability to log the data is available to all users. It is easy to use and the only option that one needs to set is the file size based on the desired time period.



Chesapeake Technology, Inc., makers of SonarWiz software, is a privately held company based in Mountain View, California. SonarWiz is used by thousands worldwide, representing clients from government and private industries, leading academic institutions, and many of the world's navies.

SBG Systems designs, manufactures, and markets state-of-the-art inertial sensors such as Attitude and Heading Reference Systems (AHRS) and Inertial Navigation Systems with embedded GNSS (INS). From hydrography to mobile mapping to aerial cartography, SBG offers a complete georeferencing solution consisting of the INS, PPK software, and support services.

###