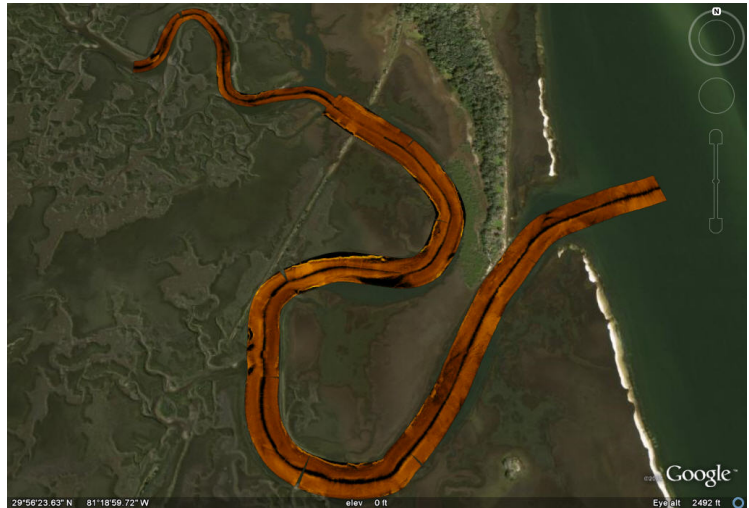


Sounding a Creek

Pancho Creek
St. Augustine, FL

In the days before automobile access to St. Augustine beaches a small local railroad served North Beach. The remains of the grade can be seen cutting across the marsh.

LAMP worked with the St. Johns County historic resources division to investigate whether trestle remains still exist in Pancho Creek and the neighboring Tolomato River. A full survey of the creek was also undertaken with the goal of monitoring small tributaries around our nation's oldest port for abandoned historic watercraft such as canoes, flat boats, and small sailing craft.



Submitted by:

Brendan Burke

Archaeologist/ Logistics Director at St. Augustine Lighthouse and Museum – LAMP

<http://www.staugustinelighthouse.com/>