

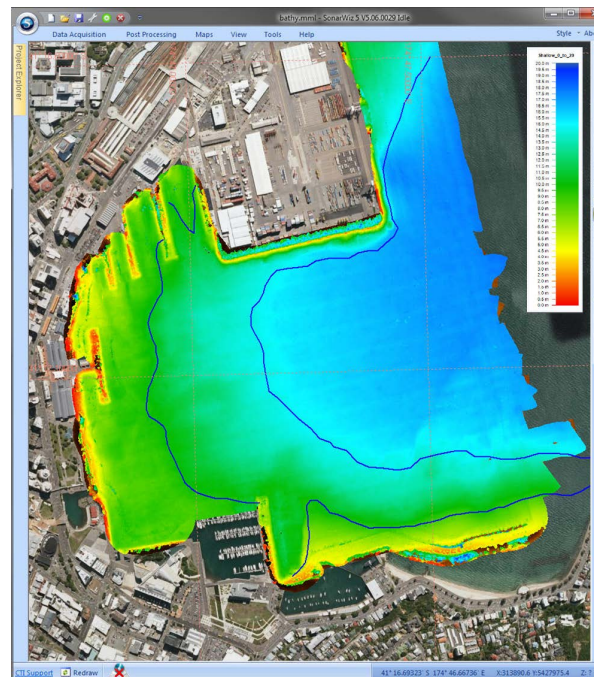
FOR IMMEDIATE RELEASE



Chesapeake Technology's SonarWiz Now Supports Multibeam and Interferometric Bathymetry Systems

CHESAPEAKE TECHNOLOGY INC. (CTI) is a world leader in real-time acquisition and GIS based processing software for seafloor mapping. CTI is pleased to announce a major advance to its SonarWiz flagship -- MBES (multibeam echo sounder) and interferometric bathymetry systems.

SonarWiz now offers data processing for both multi-beam and interferometric bathymetric systems with present support for processing bathymetry file types of ALL, HSX, JSF, R2S, RDF, S7K, SXI, and XTF. SonarWiz is the software that streamlined the processing of sidescan sonar, sub-bottom profiler and magnetometer data. Now, with new bathymetric processing capability, SonarWiz unifies the GIS workspace by incorporating all the data from these different geophysical sensors. SonarWiz Bathy reads the native data formats directly and gives the user all the tools required to view and edit the bathymetric data to produce high resolution maps. SonarWiz Bathy gives a whole new visual dimension to seafloor data by integrating processed bathymetry data with sidescan data. SonarWiz Bathy provides a great advantage to the data processor and analyst by simplifying the processing tasks, saving time and reducing project expenses.



CTI offers custom software and hardware solutions to the marine geophysical and seafloor mapping industry for over 20 years. Through its developments in marine surveying technology & solutions, CTI has become the standard for navies, government agencies, survey companies and universities around the world.

For a free trial, please complete the form at <http://www.chestech-support.com/ctisupport/requesteval.asp>.

For more information call CTI at 650-967-2045 or visit our website at <http://www.chesapeaketech.com>.

Media Contact:

Eileen Gann

+1 650.967.2045

etgann@chesapeaketech.com

www.chesapeaketech.com

###